



## Innovative Proxy Solution for Voice Communications **NAT Proxy**

### **NAT Proxy Server that enables voice packets to traverse NAT or firewall easily**

DSG NAT Proxy is a complete solution to solve complicated network problems that may encounter when enterprises use the IP-PBX Communication System.

Because of the lack of real IP addresses, many Internet facilities including Blaze Series IP-PBX Communication Systems must be installed behind NAT or firewall. When IP-PBX system has been assigned virtual or dynamic IP, sometimes the voice packets cannot traverse NAT or firewall successfully causing problems of one-way communication or failed connection.

To solve this problem, generally you would have to open some service ports on NAT or firewall. This requires a dedicated engineer who is familiar with the Internet environment and facilities to setup, but some local ISPs do not allow users to modify the networks.

DSG NAT Proxy provides a complete solution to solve this problem. With DSG NAT Proxy, Blaze Series IP-PBX Communication Systems and Off-Premises Phones can traverse more than 95% of NAT or firewall successfully without the need of opening service ports, allowing enterprises to communicate via IP-PBX Communication System without the hassles of extra configuration of your networks.



### **Advanced Enterprise IP Telephony Solutions**



## Advanced Application for NAT & Firewall Traverse

### Product Features

- Allow IP Phones and IP-PBX Communication System to traverse NAT or firewall devices
- Able to penetrate more than 95% of NAT devices
- NAT Transparency capability is superior to STUN
- Connections with remote sites are easy, simple and transparent
- Supports 30,000 voice channels
- Supports 20 sets of Blaze Series IP-PBX Communication Systems



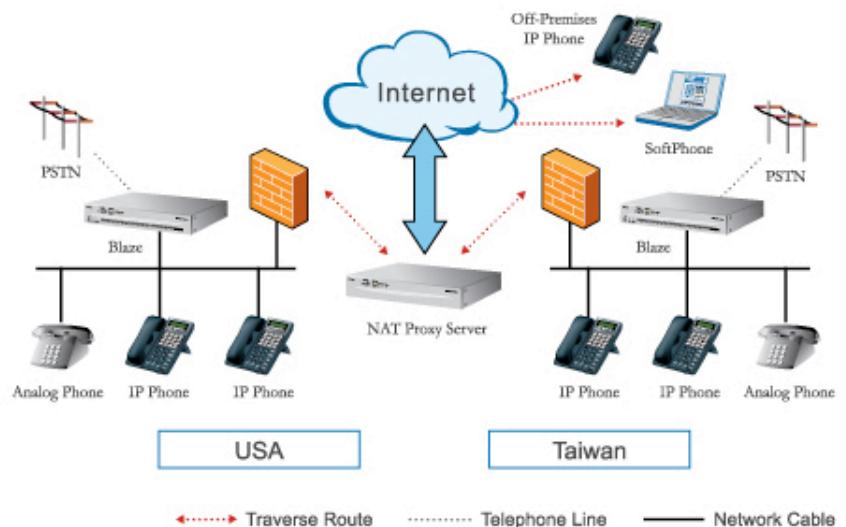
This publication is intended for reference purposes only. All product specifications are subject to change without notice. No part of this publication may be reproduced in any form or by any means, electronic, photocopying, recording or otherwise, without prior written permission of DSG Technology.

All brand names and product names are trademarks or registered trademarks of their respective companies.

For more information, please visit  
[www.dsg.com.tw](http://www.dsg.com.tw)

### Application Diagram

With DSG NAT Proxy, Blaze IP-PBX Communication System and Off-Premises Phones can traverse more than 95% of NAT or firewall successfully without opening service ports.



### Specifications

System Capacity	20 sets of Blaze 30,000 channels, 50 RTP relay sessions
CPU	32-bit
Memory	64 MB
Network Interface	10/100 Mbps, RJ45 LAN Port
Network Protocol	TCP/IP, FTP
Management Interface	GUI, Console Port
Temperature	0°C ~ 50°C (32°F ~ 122°F)
Humidity	8% - 90% non-condensing
Power Supply	100V AC - 240V AC, 45 Watt
Dimensions	65 mm x 270 mm x 440 mm (H x D x W)
Weight	3.8 kg (8.4 Lb)

#### Corporate Headquarters

7F, 222 Cheng Teh Road, Sec. 4,  
 Taipei, Taiwan 111  
 Tel : 886-2-88615558  
 Fax : 886-2-88615557  
 E-Mail : [sales@dsg.com.tw](mailto:sales@dsg.com.tw)

